

<b>Sidefag til snittehus</b>		
LE nr. 20113	<b>HOVEDTEGNING</b>	mål : 1:100

DATO **27.05.2004**  
 REV. A: 05.01.2005

Tagbeklædning:

- 25 mm ru Kalmar brædder - lærk.

Rem og Grater:

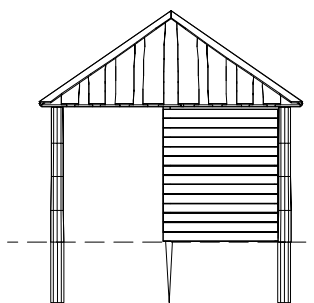
- 45 x 145 mm, 45 x 95 mm høvlet reglar - gran.

Sidebeklædning:

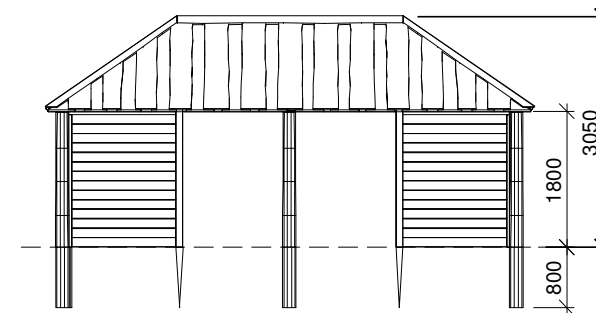
- 27 x 120 mm høvlet terrasse brædder - lærk.

Stolper:

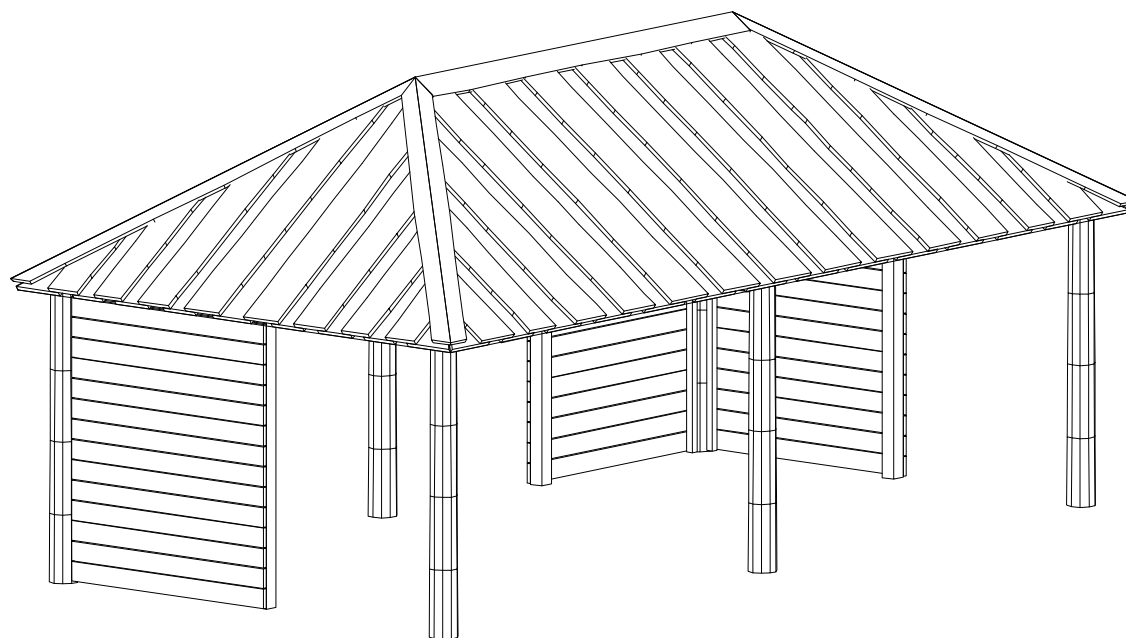
- Ø 160/180 mm - Robinia.



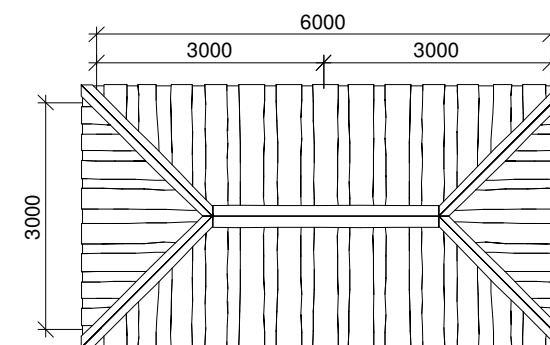
Gavl



Sidebillede



Perspektiv



Plan