

Snittehus		
LE nr. 20112	HOVEDTEGNING	mål : 1:100

DATO	27.05.2004
REV.	A: 05.01.2005
	B: 24.11.2005

Tagbeklædning:

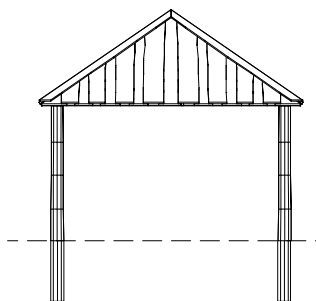
- 25 mm ru Kalmar brædder - lærk.

Rem og Grater:

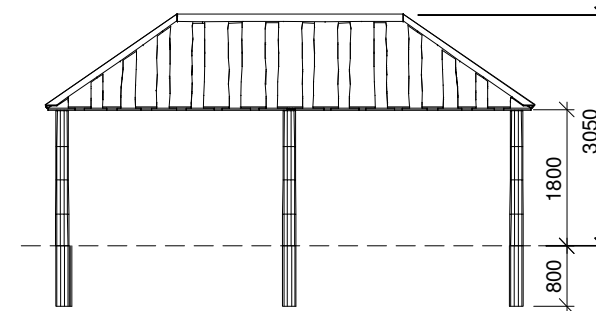
- 45 x 145 mm, 45 x 95 mm høvlet reglar - gran.

Stolper:

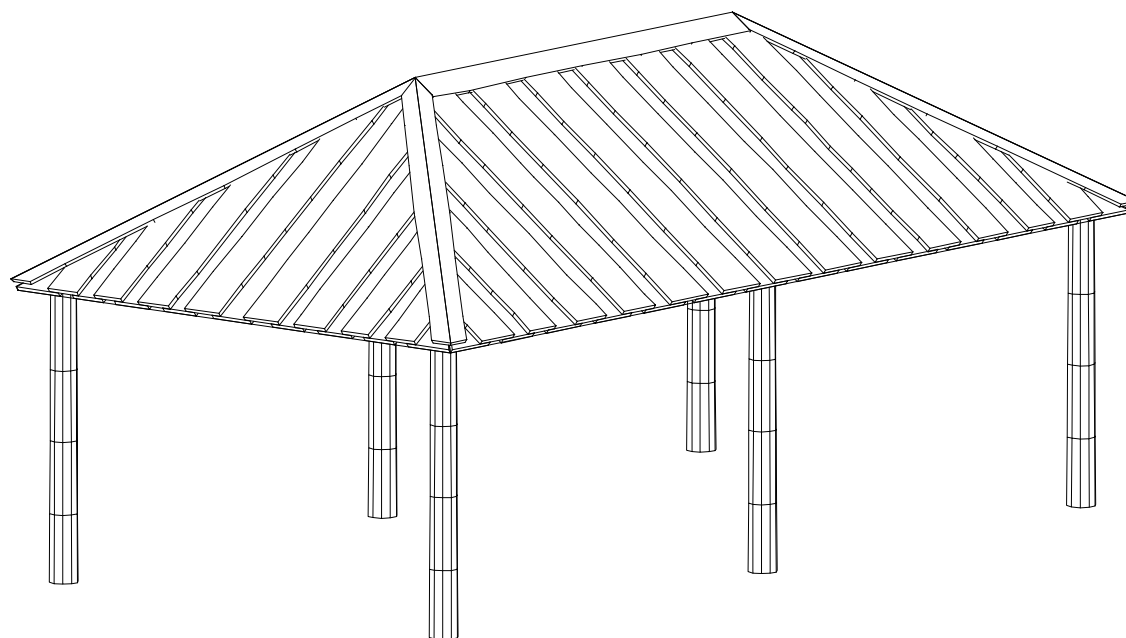
- Ø 160/180 mm - Robinia.



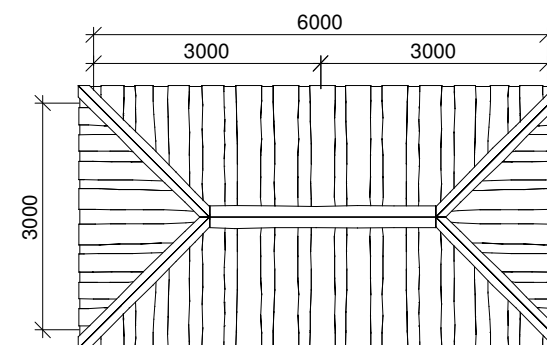
Gavl



Sidebillede



Perspektiv



Plan