

Overdækning m. redskabsrum - lærk		
LE nr. 20086	HOVEDTEGNING	mål : 1:75

Tagbeklædning:

- 25 mm ru Kalmar brædder - lærk.

Rem

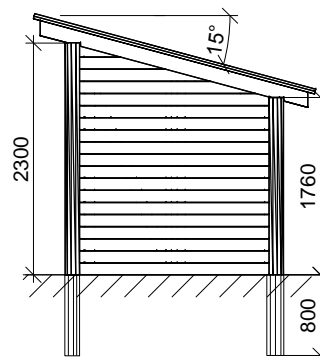
- 45 x 145 mm høvlet reglar - gran.

Sidebeklædning:

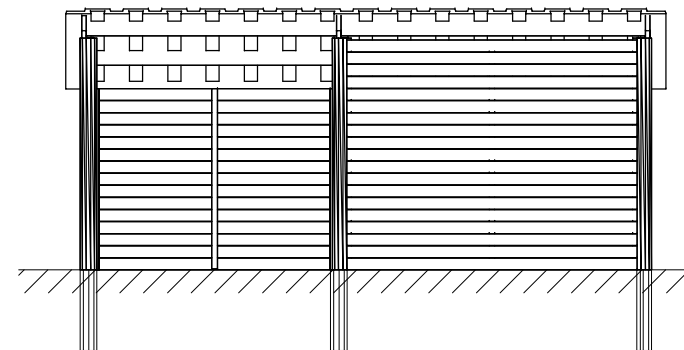
- 27 x 120 mm høvlet terrasse brædder - lærk.

Stolper:

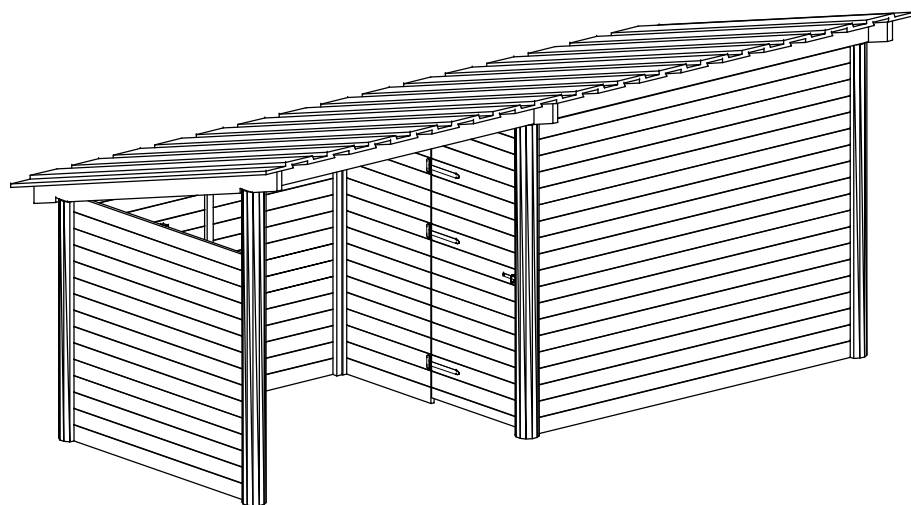
- Ø 160/180 mm - Robinia.



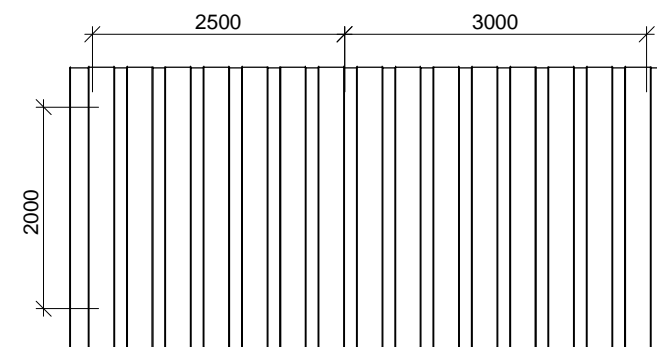
Gavl



Sidebillede



Perspektiv



Plan